



Crestbrook Place, Green Lanes, Palmers Green, London, N13
Chain Free £345,000 Leasehold

Anthony Webb
ESTATE AGENTS

Crestbrook Place, Green Lanes, Palmers Green, London, N13

Spacious three bedroom apartment located on the second floor (top) of this 1930s mansion block.

Crestbrook Place is located on Green Lanes and is ideally placed between Palmers Green and Winchmore Hills shops, restaurants, bus routes and mainline stations into Moorgate. Southgate high road and underground station are also an easy bus ride away via the W6 route.

Secure communal entrance with entry phone system to front • Spacious living room with fireplace and laminate floor • Galley kitchen with appliances and door to balcony/fire escape • Modern bathroom • Three good size bedrooms (two with fitted wardrobes and laminate floors) • Gas central heating • Communal parking facilities • Garage en bloc.

Enfield council band D
Lease remaining -135 years
Service charges-£1628.00 p.a
Ground rent-£150.00 p.a

- Three bedrooms
- Top floor apartment
- Spacious living room
- Fitted kitchen
- Bathroom
- Secure entry phone system
- Gas central heating
- Communal parking and garage en bloc





Anthony Webb



Anthony Webb



Anthony Webb



Anthony Webb

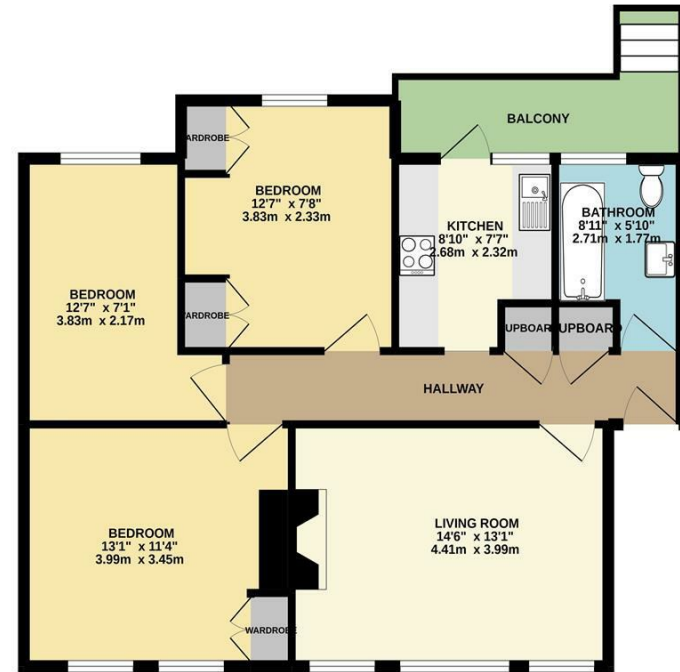
Crestbrook Place, Green Lanes Palmers Green London N13 5SB

Tenure: Leasehold
Gross Internal Area: 764.00 sq ft



Energy Efficiency Rating		Current	Potential
Very energy efficient - lower running costs			
(92 plus) A			
(81-91) B			
(69-80) C			
(55-68) D			
(39-54) E			
(21-38) F			
(1-20) G			
Not energy efficient - higher running costs			
England & Wales		EU Directive 2002/91/EC	
Environmental Impact (CO ₂) Rating		Current	Potential
Very environmentally friendly - lower CO ₂ emissions			
(92 plus) A			
(81-91) B			
(69-80) C			
(55-68) D			
(39-54) E			
(21-38) F			
(1-20) G			
Not environmentally friendly - higher CO ₂ emissions			
England & Wales		EU Directive 2002/91/EC	

SECOND FLOOR
764 sq.ft. (71.0 sq.m.) approx.



TOTAL FLOOR AREA: 764 sq. ft. (71.0 sq. m.) approx.
 Whilst every attempt has been made to ensure the accuracy of the floorplan contained herein, measurements of doors, windows, rooms and any other items are approximate and no responsibility is taken for any error, omission or misstatement. This plan is for illustrative purposes only and should be used as such by any prospective purchaser. The services, systems and appliances shown have not been tested and no guarantee as to their operability or efficiency can be given.
 Made with Metropix ©2022

Property particulars as supplied by Anthony Webb Estate Agents are set out as a general outline in accordance with the Property Misdescriptions Act (1991) only for the guidance of intending purchasers of lessees, and do not constitute any part of an offer or contract. Details are given without any responsibility, and any intending purchasers, lessees or third parties should not rely on them as inspection or otherwise as to the correctness of each of them. We have not carried out a structural survey and the services, appliances and specific fittings have not been tested. All photographs, measurements, floor plans and distances referred to are given as a guide only and should not be relied upon for the purchase of carpets or any other fixtures statements or representations of fact, but must satisfy themselves by or of fittings, gardens, roof terraces, balconies and communal gardens as well as tenure and lease details cannot have their accuracy guaranteed for intending purchasers. Lease details, service ground rent (where applicable) are given as a guide only and should be checked and confirmed by your solicitor prior to exchange of contracts. no person in the employment of Anthony Webb has any authority to make any representation or warranty whatever in relation to this property.

348 Green Lanes, Palmers Green, London N13 5TJ
 020 8882 7888
 palmersgreen@anthonywebb.co.uk
 anthonywebb.co.uk

Anthony Webb
 ESTATE AGENTS